

LEXINGTON GOLD

Proven gold exploration assets in North and South Carolina, USA

SITE OF THE ORIGINAL USA GOLD RUSH IN 1799, BIGGEST GOLD PRODUCING STATE UNTIL GOLD DISCOVERED IN CALIFORNIA

The Carolina Super Terrane is host to a number of multi million ounce mines operated by majors

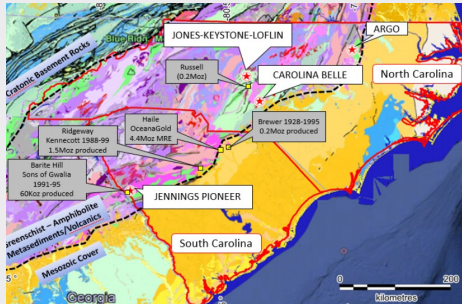
Active mining area for over 200 years with relatively limited exploration since the 1980's

- Haile – 4.8 Moz (OceanaGold)
- Ridgeway – ~1.5 Moz (Rio Tinto)

Team has +130 years collective experience in gold exploration in the United States
Carolina Gold team has +130 years collective experience in gold exploration in the United States

Located in the Carolina Super Terrane, North & South Carolina, USA

Jones-Keystone & Loflin	376 acres and combination of two mining areas (Jones-Keystone and Loflin). Established a maiden JORC resource estimate through targeted exploration Inferred Resource of ± 2Mt @ 1g/t Au for 65,000 oz contained gold
Jennings-Pioneer	400 acres situated approximately 600m from historical Barite Hill Mine and has a potential satellite deposit with historical rock chip sampling results including 92 g/t Au
Carolina Belle	431 acres combining both the historical Iola and Uwarra Mining areas. Drilling results include: 3m @ 2.65g/t Au



CASE STUDY: HAILE MINE

Romarco's exploration success could be duplicated with similar projects in the area like those owned by Lexington

Date	Significant Events
1827	Gold discovered on the property of Benjamin Haile, South Carolina
1827 - 1880's	Mining unsuccessful until 1880's
1866	Haile family abandon mine
1880 - 1910	Land acquired by New York Group with larger scale mining activity
1911 - 1921	Haile purchased in mortgage sale & unsuccessful cyanide based gold extraction of tailings
1914-1918	Three different New-York based owners
1934 - 1985	Three different New-York based owners
1972 - 1992	Geologist Earl Jones and later Piedmont Mining Company conduct exploration around the mining area – no known resource defined
2007 - 2015	TSX listed Junior, Romarco Minerals Inc purchases the Haile property and conducts modern exploration activities leading to the establishment of a 43-101 compliant resource estimation of 4.8 Moz resource @ weighted average of 1.68 g/t Au
2015:	OceanaGold (ASX) acquires Romarco for ~C\$856M in 2015

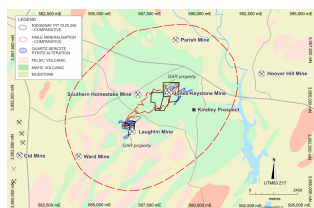
JONES-KEYSTONE & LOFLIN PROJECT

The combination of two historical mining areas – Jones-Keystone and Loflin

- Example of the newly defined "Sawyer-type" mesozonal orogenic gold deposit
- Geological similarities with Haile deposit

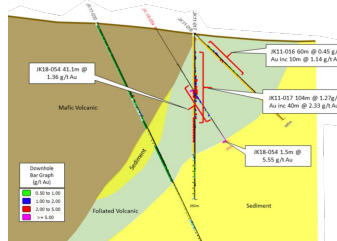
"These Sawyer-type deposits are among the more attractive targets for modern precious metals exploration programs based on the indicated potential for large-tonnage, bulk-minable, low-grade deposits with relatively high gold recovery at low unit cost over a significant mine life."

USGS 2018



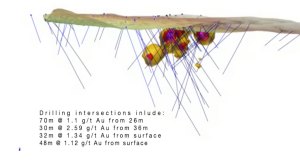
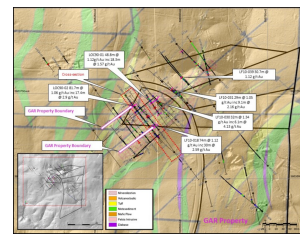
Historical exploration and production will be built upon using modern techniques

Jones-Keystone



Hole	From	Interval
JK10-006	184m	54m @ 1.56g/t Au
including	200m	28m @ 3.01g/t Au
JK11-017	28m	104m @ 1.27g/t Au
including	64m	40m @ 2.33g/t Au
JK11-036	45m	16.7m @ 1.36g/t Au
including	54.5m	5.7m @ 3.07g/t Au
JK11-048	104m	34.5m @ 1.14g/t Au
including	128m	4m @ 5.53g/t Au
JK18-054	107m	41m @ 1.36g/t Au
including	200m	1.5m @ 5.55g/t Au

Loflin



Initial Maiden JORC Resource of ~2Mt @ 1 g/t Au for 65k oz of contained gold established in 2021 for Loflin

Hole	From	Interval
LOC90-001	0m	48.8m @ 1.12 g/t Au
LFDD044	54.9m	32m @ 0.97 g/t Au
Inc	79.9m	6.1m @ 3.36 g/t Au
Inc	79.9m	1.5m @ 9.5 g/t Au
Inc	98.1m	1.5m @ 3.1 g/t Au
LFDD048	0m	35.7m @ 1.15 g/t Au
Inc	0m	18.9m @ 1.57 g/t Au
Inc	17.5m	1.5m @ 4.2 g/t Au
LF11-030	0m	32m @ 1.34 g/t Au
Inc	25m	6m @ 4.13 g/t Au
LF11-039	17m	31m @ 1.12 g/t Au
LFDD047	23.5m	12.2m @ 1.39 g/t Au
Inc	23.5m	4.1m @ 2.57 g/t Au
LFDD050	9.8m	6m @ 2.26 g/t Au

Loflin South Discovery

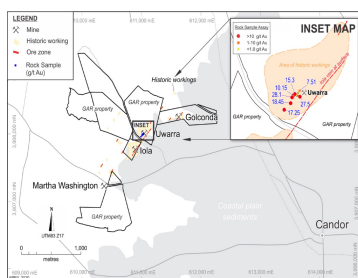
Hole	From	Interval
LFRC-002	16m	20m @ 1.52 g/t Au
including	35m	4m @ 3.01 g/t Au
LFRC-003	80m	8m @ 1.32 g/t Au
including	80m	4m @ 1.45 g/t Au
LFRC-006	20m	36m @ 1.67 g/t Au
including	28m	12m @ 3.27 g/t Au
including	32m	4m @ 5.63 g/t Au
LFRC-008	16m	12m @ 1.26 g/t Au
including	20m	4m @ 1.78 g/t Au

CAROLINA BELLE PROJECT

Combines Iola and Uwarra historical mining areas:

- Iola Mine produced ~ 45 Koz Au
- Uwarra Mine produced ~ 5 Koz Au
- Iola mined to ~200m depth
- Uwarra mined to ~100m depth
- Mineralisation open at depth and along strike and buried parallel lodes under shallow cover
- High grade surface rock assay returning up to 17g/t Au
- CPR reported mine grades of 10 g/t Au with low sulphides and free milling

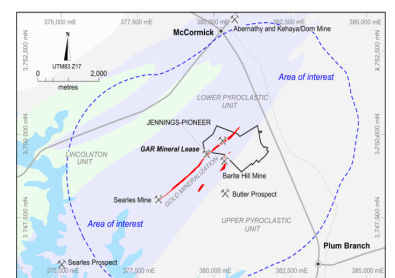
Hole	From	Interval
CRBC-14	64m	3m @ 3.68 g/t Au
and	28m	4m @ 1 g/t Au
CRBC-15	28m	4m @ 1.8 g/t Au
CRBC-02	Surface	8m @ 1.07 g/t Au
CRBC-22	68m	11m @ 1.01 g/t Au
inc	72m	4m @ 1.62 g/t Au
CRBC-24	64m	4m @ 2.1 g/t Au



JENNINGS-PIONEER

Discovered prior to 1860, adjacent to 0.6Moz gold mine – Barite Hill

- Approximately 600m from historical third party Barite Hill Mine and potential satellite deposit
- Barite Hill: Au rich VMS deposit with Volcanic Arc related signatures similar to Haile Mine
- Barite Hill: ~0.6 Moz Au resource / 60 Koz historical Au production
- Historical rock chip samples from Jennings includes: up to 92 g/t Au; 1,342 g/t Ag; 5.6% Cu and 14.1% Zn
- Mineralisation identified over 3km trend parallel to Barite Hill
- LEX completed interpretation and modelling of VTEM geophysical survey
- Two potential anomalies identified for further investigation



HIGHLY EXPERIENCED BOARD

Recognised experts in global mining with a proven track record of building value

Ed Nealon
Chairman
Qualified geologist with 46 years' experience in mining and exploration
Founded his consultancy in 1983 and worked in major global mining centres
Founded Aquarius Platinum Ltd, co-founded Sylvania Platinum Ltd and served on both Boards of Directors
Masters in Geology, member of the Australian Institute of Mining and Metallurgy (AusIMM)

Dr. Bernard Olivier,
Chief Executive Officer
Qualified geologist with 23 years' experience in mining and exploration
As CEO he Led the team for Bezant
Resources plc and established its maiden JORC Resource estimate of 3.9moz Au at its Mankayan project
Member of AusIMM

Rhod Grivas,
Non-Executive Director
Qualified geologist with +30 years' experience in resources, including 20 years of Board experience on ASX listed companies
Has held several directorships at public companies, incl. as Managing Director of ASX/TSX gold miner Diro Exploration (ASX:DIO)
Member of AusIMM and the Australian Institute of Company Directors

Melissa Sturgess
Non-Executive Director
Holds a BSc. And an MBA, with several years' experience as a director of AIM and ASX listed companies
Founding director of Sylvania Resources and several other companies operating in metals and mining throughout Africa and quoted on AIM
Non-Executive Director and Shareholder of Imperial X plc and CEO and major shareholder of Ananda Developments plc, both listed on Aquis

EXPERIENCED US JV PARTNER

Vast local knowledge and significant expertise in the local geology

Dr Jonathan Powers
PhD Geology, +20 years gold and base metal exploration experience in US Southeast (Noranda, BHP)
Co-discoverer of Deep River Au-Cu-Mo deposit in North Carolina

Peter Evans
Co-Founder
+40 year gold and base metal exploration experience in the US southeast
Led Ridgeway discovery and development teams; Ridgeway mine manager 1989 - 1993

John Prochnau
Co-Founder
Minerals industry consultant with international record of mine discovery and development
Casey Explorers' League Hall of Fame inductee (2005)



Lexington Gold Limited
Clarendon House, 2 Church Street Hamilton HM 11 Bermuda
Phone: +44 (0) 1223 511 767
Email: info@lexingtongold.co.uk
www.lexingtongold.co.uk

Financial Public Relations
Yellow Jersey PR
Phone: +44 (0)20 3004 9512
Email: lexington@yellowjerseypr.com